

# Leuchtfuehr Cup 2023



<b>Oil Pattern Distance:</b>	<b>41 Feet</b>	<b>Reverse Brush Drop:</b>	<b>41 Feet</b>	<b>Oil Per Board:</b>	<b>40 uL</b>
<b>Forward Oil Total:</b>	<b>15.2 mL</b>	<b>Reverse Oil Total:</b>	<b>10.08 mL</b>	<b>Volume Oil Total:</b>	<b>25.28 mL</b>
<b>Forward Boards Crossed:</b>	<b>380 Boards</b>	<b>Reverse Boards Crossed:</b>	<b>252 Boards</b>	<b>Total Boards Crossed:</b>	<b>632 Boards</b>

	Start	Stop	Loads	Speed	Crossed	Start	End	Feet	T.Oil
1	2L	2R	5	14	185	0.0	7.9	7.9	7400
2	7L	7R	1	14	27	7.9	9.8	1.9	1080
3	10L	9R	2	14	44	9.8	13.7	3.9	1760
4	11L	10R	3	18	60	13.7	21.3	7.6	2400
5	12L	11R	2	18	36	21.3	26.4	5.1	1440
6	14L	13R	2	18	28	26.4	31.5	5.1	1120
7	2L	2R	0	22	0	31.5	36.0	4.5	0
8	2L	2R	0	26	0	36.0	41.0	5.0	0

Navigation: Forward Reverse More

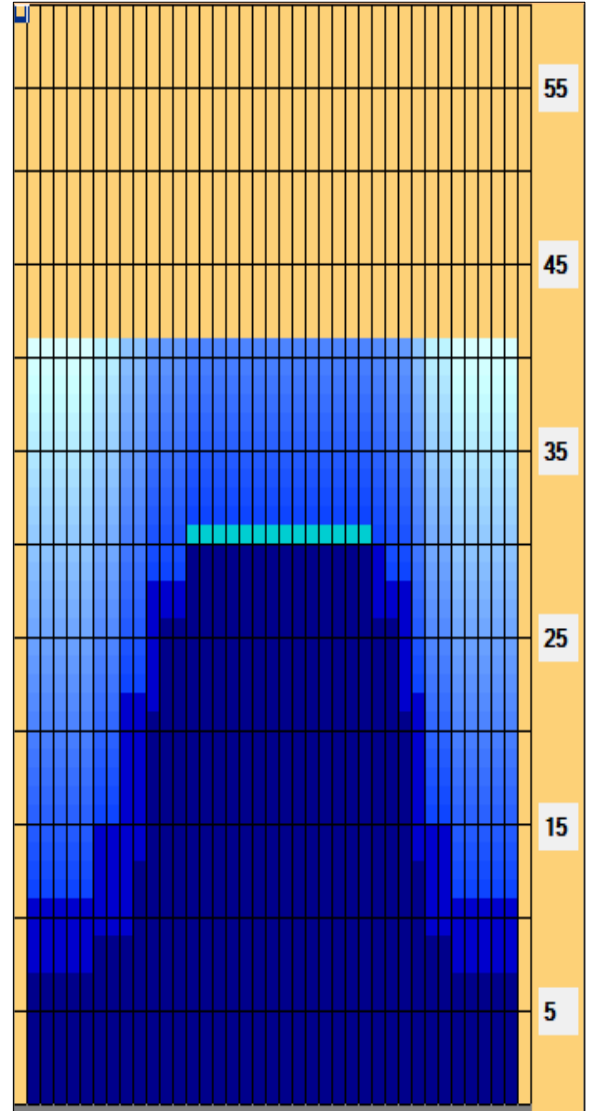
	Start	Stop	Loads	Speed	Crossed	Start	End	Feet	T.Oil
1	2L	2R	0	26	0	41.0	30.0	-11.0	0
2	14L	12R	1	18	15	30.0	27.5	-2.5	600
3	11L	10R	2	18	40	27.5	22.4	-5.1	1600
4	9L	9R	3	18	69	22.4	14.8	-7.6	2760
5	7L	7R	2	14	54	14.8	10.9	-3.9	2160
6	2L	2R	2	14	74	10.9	7.0	-3.9	2960
7	2L	2R	0	10	0	7.0	0.0	-7.0	0

Navigation: Forward Reverse More

Conditioner:  
Type In or Select One

TransferType:  
Type In or Select One

- Forward
- Reverse
- Combined
- Buff



Item	3L-7L:18L-18R	8L-12L:18L-18R	13L-17L:18L-18R	18L-18R:17R-13R	18L-18R:12R-8R	18L-18R:7R-3R
Description	Outside Track:Middle	Middle Track:Middle	Inside Track:Middle	Middle: Inside Track	Middle:Middle Track	Middle:Outside Track
Track Zone Ratio	3.29	1.56	1.02	1	1.39	3.29

